

Protective Caps GPN 240

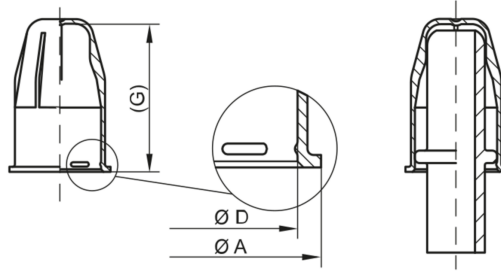
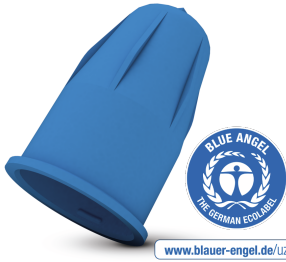


www.poeppelmann.com/en/gpn240

Application

The GPN 240 protective caps are suitable for protecting the connection area of SAE quick-connect plugs. The protective cap is designed not to touch the sealing surface of the SAE connector and is suitable for pressure testing within certain limits.

All information about 100% PCR and the recycling blend can be found in "Sustainability at Pöppelmann" (see chapter 2) or at www.poeppelmann.com/en/kapsto/Responsibility.html



Article	A	D	G	100% PCR	Recycling blend	Virgin material
GPN 240 MT 8	14,7	10,9	24,7	2400008RB61	24000080073	24000080000
GPN 240 MT 9,5	16,7	12,9	25,1	24000095RB61	240000950073	240000950000
GPN 240 MT 10	17,2	13,4	27,8	24000010RB61	240000100073	240000100000
GPN 240 MT 12	20,3	16,5	29,6	24000012RB61	240000120073	240000120000
GPN 240 MT 18	24,8	21	29,6	24000018RB61	240000180073	240000180000

Dimensions in mm.

Information on materials, colours, designs and use of our products can be found on the website and in chapter 3 'Materials and application'.

The articles in the 100% PCR column consist of 98% PCR-PE and 2% colour based on a PIR carrier. The plastic used consists of 100% PCR.

The articles in the recycled mixture column consist of a blend of PCR and virgin material. Colour deviations and black dots cannot be completely avoided during production and are permissible for these items. We recommend carrying out functional tests before series production.

Your added values:



More resource-saving.

This standard series is available from PCR, saves CO₂e emissions and conserves resources.



Better fit.

For protecting the mating surfaces of SAE quick-connect plugs.



Seals better.

Suitable for pressure testing depending on the application.



Cleaner.

Production in accordance with VDA Band 19 and ISO 16232 in our cleanroom on request.



Better.

The sealing surface of the SAE connector remains untouched.