

VDA Sealing Plugs

GPN 247



www.poeppelmann.com/en/gpn247

NEW

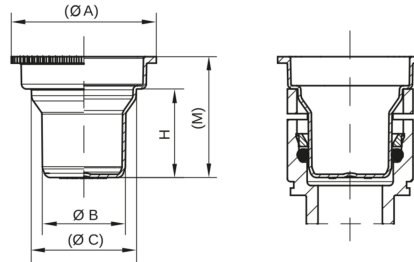
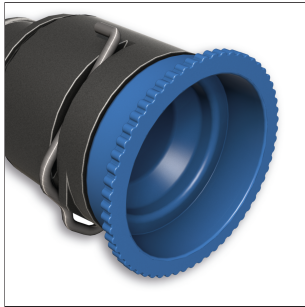
Application

The VDA sealing plugs GPN 247 are suitable for protecting the connection area of VDA quick-release couplings. The clamping at the upper edge offers special protection. Sealing is carried out gently and securely on the internal sealing rings of the connector. The plastic used is made from post-consumer recycled material.

All information about 100% PCR can be found in "Sustainability at Pöppelmann" (see chapter 2) or at www.poeppelmann.com/en/kapsto/Responsibility.html



www.blauer-engel.de/uz30a



PCR-PE
blue

Article	VDA coupling NW	A	B	C	H	M	100% PCR
GPN 247 NW 6	6	25	9,9	16	21,3	29,5	24700060000
GPN 247 NW 8	8	29	12	18	22,7	30,8	24700080000
GPN 247 NW 12	12	33	15,8	21,1	22,8	31,8	24700120000
GPN 247 NW 14	14	32,6	17,2	21,1	29,2	31,6	24700140000
GPN 247 NW 16	16	41	21,9	28,1	27,3	37,3	24700160000
GPN 247 NW 20	20	45	25,9	32,5	27,3	37,5	24700200000
GPN 247 NW 26	26	51,4	32	39,1	29,2	39,5	24700260000
GPN 247 NW 32	32	57,4	37,8	45,1	29,2	40	24700320000
GPN 247 NW 35	35	60,4	40,8	48,1	29,2	41,5	24700350000
GPN 247 NW 40	40	65,4	45,8	53,1	29,2	45	24700400000
GPN 247 NW 45	45	70,4	50,8	58,1	29,2	43,5	24700450000
GPN 247 NW 50	50	75,4	55,8	63,1	29,2	44,8	24700500000

Dimensions in mm.

Information on materials, colours, designs and use of our products can be found on the website and in chapter 3 'Materials and application'.

The article consists of 98 % PCR-PE and 2 % colour based on a PIR carrier. The plastic used consists of 100 % PCR.

For these articles, colour deviations and black dots cannot be completely avoided in production and are permissible. We recommend carrying out functional tests before series production.

Your added values:



More resource-saving.

The plastic used consists of 100 % recycled material.



Better fit.

For protecting the mating surfaces of VDA quick connectors.



Cleaner.

Production in accordance with VDA Band 19 and ISO 16232 in our cleanroom on request.



Better.

Clamping is carried out gently and safely on the internal sealing rings of the connector.