

QC-Plugs GPN 245 Type B



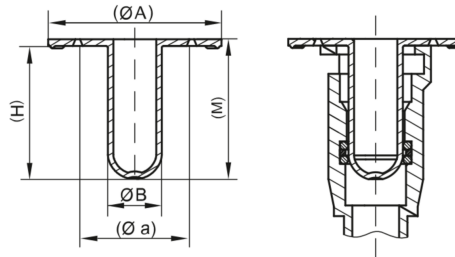
www.poeppelmann.com/en/gpn245b

Application



The QC plugs GPN 245 Type B are suitable for the protection of SAE quick connector couplings, based on SAE J2044. They clamp gently and securely onto the internal sealing rings of the connector. The QC plugs are suitable for pressure tests within certain limits. The ring lug enables easy assembly and disassembly.

All information about 100% PCR and the recycling blend can be found in "Sustainability at Pöppelmann" (see chapter 2) or at www.poeppelmann.com/en/kapsto/Responsibility.html



PCR-PE
blue



PCR-PE / PE-LD
yellow



PE-LD
natural

Article	SAE coupling NW mm	SAE coupling NW inch	A	a	B	H	M	100% PCR	Recycling blend	Virgin material
GPN 245 QCL 6,35	6,35	1/4	31,6	20,6	6,35	25,3	26,8	2460635RB61	24606351073	24606350000
GPN 245 QCL 8	8	5/16	35	21	7,7	26	27,5			24600080000
GPN 245 QCL 9,5	9,5	3/8	30,8	16,8	9,5	25,8	27,3	2460095RB61	24600951073	24600950000
GPN 245 QCL 10	10	-	32,8	18,8	9,7	30	31,5	2460010RB61	24600101073	24600100000
GPN 245 QCL 11,11	11,11	7/16	38	24	11	29,2	30,7			24611110000
GPN 245 QCL 12	12	-	38	24	11,8	29,2	30,7	2460012RB61	24600121073	24600120000
GPN 245 QCL 19,05	19,05	3/4	50	36	18,8	28	29,5	2461905RB61	24619051073	24619050000
GPN 245 QCL 25,4	25,4	1	53,5	39,5	25,4	34	35,5	2462540RB61	24625401073	24625400000

Dimensions in mm.

Information on materials, colours, designs and use of our products can be found on the website and in chapter 3 'Materials and application'.

The articles in the 100% PCR column consist of 98% PCR-PE and 2% colour based on a PIR carrier. The plastic used consists of 100% PCR.

The articles in the recycled mixture column consist of a blend of PCR and virgin material. Colour deviations and black dots cannot be completely avoided during production and are permissible for these items. We recommend carrying out functional tests before series production.

Your added values:



More resource-saving.

This standard series is available from PCR, saves CO₂e emissions and conserves resources.



Better fit.

Suitable for SAE quick connectors in accordance with SAE J2044



Seals better.

Suitable for pressure testing depending on the application.



Cleaner.

Production in accordance with VDA Band 19 and ISO 16232 in our cleanroom on request.



Better.

Clamping is carried out gently and safely on the internal sealing rings of the connector.