

# Grip Plugs GPN 308



[www.poeppelmann.com/en/gpn308](http://www.poeppelmann.com/en/gpn308)

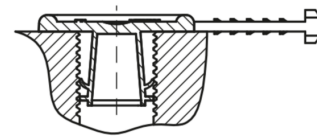
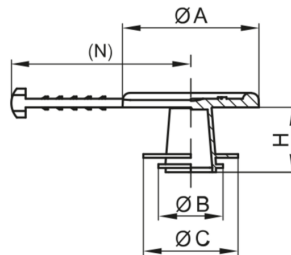
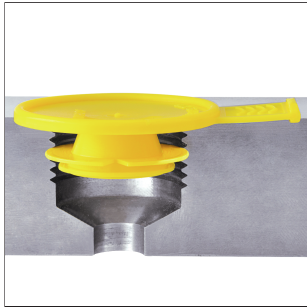
## Application

The GPN 308 grip plugs are suitable for protecting bore holes and internal threads. The innovative grip tab in a protected tab design enables very quick removal. Individual sizes in the range protect several thread sizes, and flexible ribs accommodate larger tolerances.

All information about 100% PCR and the recycling blend can be found in "Sustainability at Pöppelmann" (see chapter 2) or at [www.poeppelmann.com/en/kapsto/Responsibility.html](http://www.poeppelmann.com/en/kapsto/Responsibility.html)



[www.blauer-engel.de/uz30a](http://www.blauer-engel.de/uz30a)



PCR-PE  
blue



PCR-PE / PE-LD  
yellow



PE-LD  
yellow

Article	A	B	C	H	N	100% PCR	Recycling blend	Virgin material
GPN 308 SL 132	19	9	13,2	9	25	3080132RB61	30801320073	30801320000
GPN 308 SL 165	22,7	12	16,5	7	27	3080165RB61	30801650073	30801650000
GPN 308 SL 195	30	15,5	19,5	8	31	3080195RB61	30801950073	30801950000
GPN 308 SL 238	34,3	19,3	23,8	9,5	32	3080238RB61	30802380073	30802380000
GPN 308 SL 276	40	22,5	27,6	9,5	35	3080276RB61	30802760073	30802760000
GPN 308 SL 345	45	29,9	34,5	10	38	3080345RB61	30803450073	30803450000

Dimensions in mm.

Information on materials, colours, designs and use of our products can be found on the website and in chapter 3 'Materials and application'.

The articles in the 100% PCR column consist of 98% PCR-PE and 2% colour based on a PIR carrier. The plastic used consists of 100% PCR.

The articles in the recycled mixture column consist of a blend of PCR and virgin material. Colour deviations and black dots cannot be completely avoided during production and are permissible for these items. We recommend carrying out functional tests before series production.

## Application guide for internal use

Article	metric female thread	Pipe thread	Unified thread according to ASME / ANSI B 1:1 UN / UNC / UNF / UNEF
GPN 308 SL 132	M 10   M 12	1/8	7/16
GPN 308 SL 165	M 14   M 16	1/4	1/2   5/8   9/16
GPN 308 SL 195	M 18   M 20	3/8	3/4
GPN 308 SL 238	M 22   M 24	1/2   5/8	7/8
GPN 308 SL 276	M 26   M 28	3/4	1 1/16   1 1/8
GPN 308 SL 345	M 30   M 36	1	1 1/4   1 3/8

This application table is a guide. We will be happy to send you free test samples. For openings and bores without threads, please select according to functional dimensions B and C.

## Your added values:



**More resource-saving.**

This standard series is available from PCR, saves CO<sub>2</sub>e emissions and conserves resources.



**Saves time.**

Newly designed removal tab for fast handling. Protected tab design.



**More versatile.**

Suitable for different thread sizes. Flexible ribs for accommodating large tolerances.



**Better.**

Protection for bore holes and internal threads.