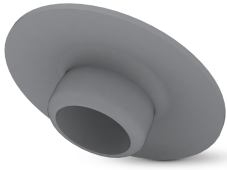


# Covers GPN 340



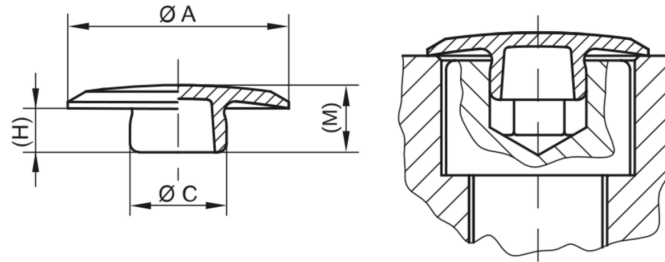
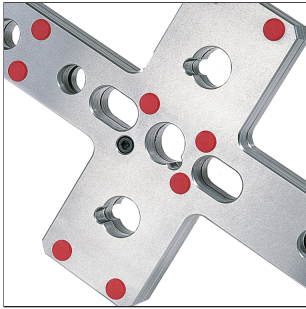
[www.poeppelmann.com/en/gpn340](http://www.poeppelmann.com/en/gpn340)

## Application



The GPN 340 covers are suitable for the protection of countersunk hexagonal socket screws pursuant to DIN EN ISO 4762 and locking screws as per DIN 908 against dirt and damage.

All information about the recycling blend can be found in "Sustainability at Pöppelmann" (see chapter 2) or at [www.poeppelmann.com/en/kapsto/Responsibility.html](http://www.poeppelmann.com/en/kapsto/Responsibility.html)



PCR-PE / PE-LD  
grey

PE-LD  
grey

Article	Thread	hexagon socket SW	A	C	H	M	Recycling blend	Virgin material
GPN 340 SW 2,5	M 3	2,5	10	2,8	2,2	4	34000250073	34000250000
GPN 340 SW 3	M 4	3	12	3,3	2,3	4,3	34000300073	34000300000
GPN 340 SW 4	M 5	4	14	4,4	2,9	4,9	34000400073	34000400000
GPN 340 SW 5	M 6	5	15	5,4	3,3	5,3		34000500000
GPN 340 SW 6	M 8	6	19	6,3	4	6,1	34000600073	34000600000
GPN 340 SW 8	M 10	8	22	8,5	4,5	7	34000800073	34000800000
GPN 340 SW 10	M 12	10	24	10,5	5	7,3	34001000073	34001000000
GPN 340 SW 14	M 16	14	30	14,5	7,1	9,7	34001400073	34001400000
GPN 340 SW 17	M 20	17	36,5	17,5	9	11,6	34001700073	34001700000

Dimensions in mm.

Information on materials, colours, designs and use of our products can be found on the website and in chapter 3 'Materials and application'.

\*The article consists of a mixture of PCR (post consumer recylate) and virgin PE-LD (polyethylene). Colour deviations and black dots cannot be completely avoided during production and are permissible for these items. We recommend carrying out functional tests before series production.

## Your added values:



**More resource-saving.**

This standard series is available from PCR, saves CO<sub>2</sub>e emissions and conserves resources.



**Better fit.**

Suitable for countersunk hexagonal socket head screws in accordance with DIN EN ISO 4762 and locking screws conforming to DIN 908.