

Tapered Plugs GPN 500



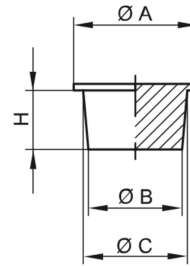
www.poeppelmann.com/en/gpn500

Application



The GPN 500 tapered plugs offers protection for small internal threads and bore holes against dirt and damage. The solid design is suitable for high loads. The conical shape of the tapered plugs allows tolerances to be accommodated.

All information about 100% PCR and the recycling blend can be found in "Sustainability at Pöppelmann" (see chapter 2) or at www.poeppelmann.com/en/kapsto/Responsibility.html



PCR-PE
blue

PCR-PE / PE-LD
yellow

PE-LD
natural

Article	Thread	A	B	C	H	100% PCR	Recycling blend	Virgin material
GPN 500 B 31	M 4	5,5	3,2	3,5	3	5000031RB61	50000311073	50000310000
GPN 500 B 41	M 5	7,5	4,1	4,5	3	5000041RB61	50000411073	50000410000
GPN 500 B 43	M 5 x 0,5	8	4,4	4,7	3	5000043RB61	50000431073	50000430000
GPN 500 B 47	M 6	8	4,9	5,4	4	5000047RB61	50000471073	50000470000
GPN 500 B 53	M 6 x 0,5	8,5	5,4	5,6	3	5000053RB61	50000531073	50000530000
GPN 500 B 58	M 7	9	5,8	6,1	4	5000058RB61	50000581073	50000580000
GPN 500 B 64	M 8	9	6,4	6,8	4	5000064RB61	50000641073	50000640000
GPN 500 B 68	M 8 x 1	10	6,8	7,2	4	5000068RB61	50000681073	50000680000
GPN 500 B 78	M 9 x 1	11	7,8	8,2	4	5000078RB61	50000781073	50000780000

Dimensions in mm.

Information on materials, colours, designs and use of our products can be found on the website and in chapter 3 'Materials and application'.

The articles in the 100% PCR column consist of 98% PCR-PE and 2% colour based on a PIR carrier. The plastic used consists of 100% PCR.

The articles in the recycled mixture column consist of a blend of PCR and virgin material. Colour deviations and black dots cannot be completely avoided during production and are permissible for these items. We recommend carrying out functional tests before series production.

Your added values:



More resource-saving.

This standard series is available from PCR, saves CO₂e emissions and conserves resources.



More robust.

Solid design for higher demands.



More versatile.

Tapered plug to accommodate tolerances.



Better.

For closing internal threads and bore holes.