

Thin-Walled Tapered Closures

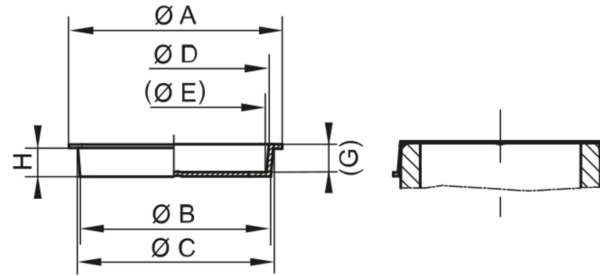
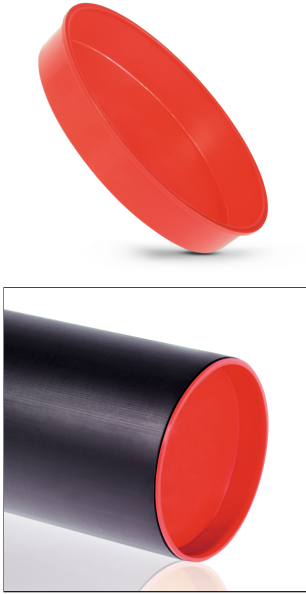
GPN 602



www.poeppelmann.com/en/gpn602

Application

The GPN 602 thin-walled plugs can be used as a cap or plug and are suitable for the protection of external threads or to close bore holes and openings. The thin-walled design results in faster assembly and disassembly and lower material consumption in production. The conical shape is ideal for accommodating tolerances.



PP-C
red

Article	A	B	C	D	E	G	H	Virgin material
GPN 602 D 1055*	110	103	105	104	102	17	16	60210550000
GPN 602 D 1070	117	104,5	107	106	103,5	17,2	16	60210700000
GPN 602 D 1090	117	106	109	107,5	106	18,4	17	60210900000
GPN 602 D 1230	130	119,5	123	122	118	24,4	23	60212300000
GPN 602 D 1290	136	126	129	128	125	26,5	25	60212900000
GPN 602 D 1306	136,5	128	130,6	129	127	24,2	23	60213060000
GPN 602 D 1380	144	135	138	137	134	24,4	23	60213800000

Dimensions in mm.

* This size is supplied with hole.

Information on materials, colours, designs and use of our products can be found on the website and in chapter 3 'Materials and application'.

Your added values:



Saves time.

Easy handling due to being a thinner walled version of the GPN 600.



More resource-saving.

Significantly lower material usage compared to other conical closures made of PE-LD or PE-LLD.



More versatile.

Can be used universally as plug or cap. The tapered design is ideal for accommodating tolerances.



Cleaner.

Production in accordance with VDA Band 19 and ISO 16232 in our cleanroom on request.



Better.

To close off bore holes and internal openings, or to protect studs and external threads.