

Flange Covers

GPN 655 Type B



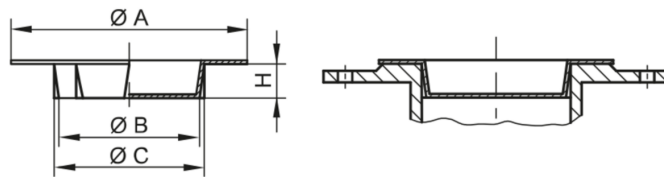
www.poeppelmann.com/en/gpn655b

Application



The flange covers GPN 650 Type B protect flanges in accordance with ANSI/ASME B 16.5 against damage and dirt, seal the opening and protect the sealing face of the flange fitting. The flange covers have additional clamping ribs on the tapered shaft to accommodate larger tolerances.

All information about 100% PCR and the recycling blend can be found in "Sustainability at Pöppelmann" (see chapter 2) or at www.poeppelmann.com/en/kapsto/Responsibility.html



PCR-PE blue	PCR-PE / PE-LD yellow	PE-LD yellow
100% PCR	Recycling blend	Virgin material

Article	Nominal width mm	A	B	C	H	100% PCR	Recycling blend	Virgin material
GPN 655 / 15-R	15	75	16,7	17,8	10	6550015RB61	65500150073	65500150000
GPN 655 / 25-R	25	100	27,3	28,8	15	6550025RB61	65500250073	65500250000
GPN 655 / 32-R	32	110	36,5	38,5	15	6550032RB61	65500320073	65500320000
GPN 655 / 40-R	40	125	42	44,4	15	6550040RB61	65500400073	65500400000
GPN 655 / 50-R	50	135	55	56,5	15	6550050RB61	65500500073	65500500000
GPN 655 / 65-R	65	122	68	71	20	6550065RB61	65500650073	65500650000
GPN 655 / 80-R	80	138	81	83,1	20	6550080RB61	65500800073	65500800000
GPN 655 / 100-R	100	190	106	108,5	20	6550100RB61	65501000073	65501000000
GPN 655 / 125-R	125	225	131,5	134	20	6550125RB61	65501250073	65501250000
GPN 655 / 150-R	150	270	160	161,5	20	6550150RB61	65501500073	65501500000

Dimensions in mm.

Information on materials, colours, designs and use of our products can be found on the website and in chapter 3 'Materials and application'.

The articles in the 100% PCR column consist of 98% PCR-PE and 2% colour based on a PIR carrier. The plastic used consists of 100% PCR.

The articles in the recycled mixture column consist of a blend of PCR and virgin material. Colour deviations and black dots cannot be completely avoided during production and are permissible for these items. We recommend carrying out functional tests before series production.

Your added values:



More resource-saving.

This standard series is available from PCR, saves CO₂e emissions and conserves resources.



Better fit.

Protection for flanges in accordance with ANSI/ASME B 16.5.



More versatile.

Design B with additional clamping ribs for accommodating larger tolerances.



Better.

Closes the opening and protects the sealing face of the flange fitting.