

Sealing Screw Plugs

GPN 736

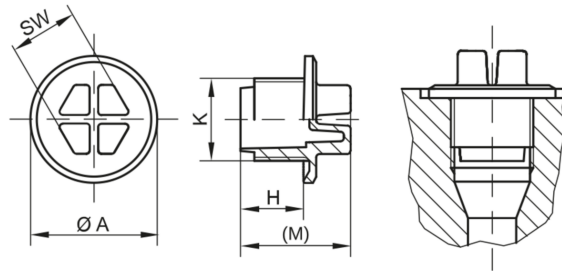
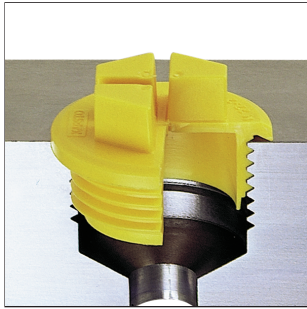


www.poeppelmann.com/en/gpn736

Application



The GPN 736 sealing screw plugs are suitable for closing threaded holes as per DIN 3852-1 and ISO 11926 and are particularly well suited for processes like cleaning, testing, painting, or for transport. The robust material is high-quality and particularly impact-resistant. The circumferential sealing lip, which is designed without a mould seam, prevents the ingress and escape of liquids within certain limits. They are fitted using a screwdriver or spanner.



PA 6
yellow

Article	A	Thread K	H	M	Wrench width metric	Virgin material
GPN 736 M 10 x 1	15,4	M 10 x 1	8	15	7	73610100000
GPN 736 M 12 x 1,5	18,4	M 12 x 1,5	9	16	10	73612150000
GPN 736 M 14 x 1,5	20,4	M 14 x 1,5	9	17	10	73614150000
GPN 736 M 16 x 1,5	23,4	M 16 x 1,5	10	20	13	73616150000
GPN 736 M 18 x 1,5	25,4	M 18 x 1,5	11	21	13	73618150000
GPN 736 M 22 x 1,5	28,4	M 22 x 1,5	12	22	15	73622150000
GPN 736 M 27 x 2	33,35	M 27 x 2	15	25	19	73627200000
GPN 736 M 33 x 2	42,3	M 33 x 2	15	25	24	73633200000
GPN 736 M 42 x 2	51,3	M 42 x 2	15	26	24	73642200000
GPN 736 M 48 x 2	56,3	M 48 x 2	17	28	30	73648200000
GPN 736 7/16-20 UNF	17,4	7/16 - 20 UNF	9	16	10	73626670000
GPN 736 9/16-18 UNF	21,4	9/16 - 18 UNF	10	18	10	73626680000
GPN 736 3/4-16 UNF	26,9	3/4 - 16 UNF	11	21	13	73626690000
GPN 736 7/8-14 UNF	30,4	7/8 - 14 UNF	13	23	15	73626700000
GPN 736 1 1/16-12 UN	37,85	1 1/16 - 12 UN	15	25	19	73626710000
GPN 736 1 5/16-12 UN	44,8	1 5/16 - 12 UN	15	25	24	73626720000
GPN 736 1 5/8-12 UN	55,8	1 5/8 - 12 UN	15	26	30	73626730000
GPN 736 1 7/8-12 UN	63,3	1 7/8 - 12 UN	15	26	30	73626740000

Dimensions in mm.

Information on materials, colours, designs and use of our products can be found on the website and in chapter 3 'Materials and application'.

Your added values:



Better fit.

Suitable for internal threads in accordance with DIN 3852-1, ISO 11926.



Seals better.

The circumferential sealing lip (no mould-parting feature) prevents the penetration or leaking of liquids depending on the application.



More robust.

Made from premium impact-resistant polyamide.



Better.

Installation either with screw driver or spanner. Particularly suitable for processes like cleaning, testing, painting, or for transport.



Seals better.

Protection against splashing water from any direction (IPX9K) depending on the specific connector design and quality. Related to Pöppelmann sample connector, tested according to DIN 40050.*