

Sealing Plugs GPN 915

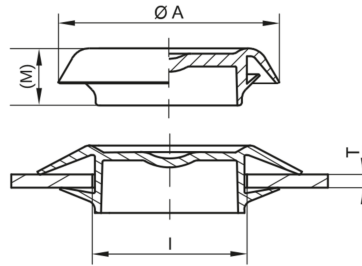


www.poeppeilmann.com/en/gpn915

Application



The GPN 915 sealing plugs protect housing apertures from dirt and damage, can be used for various wall thicknesses and aperture diameters and have a very flat, space-saving design. Sealing lips prevent the ingress of liquids within certain limits. The material is heat-resistant up to 180° C for short periods.



PHT / TPC-ET
black

Article	A	I min	I max	T min	T max	M	Virgin material
GPN 915 / 12	20,8	12	13	0,5	3	9	91500120000
GPN 915 / 15	23,8	15	17	0,5	3	8,9	91500150000
GPN 915 / 20	27,9	19,5	21,5	0,5	3	8,8	91500200000
GPN 915 / 25	34	25	27	0,5	3	8,6	91500250000
GPN 915 / 30	39	30	31	0,5	3	8,9	91500300000
GPN 915 / 35	48	34,5	36,5	0,5	3	11	91500350000
GPN 915 / 50	59	50	52	0,5	3	8,8	91500500000

Dimensions in mm.

Information on materials, colours, designs and use of our products can be found on the website and in chapter 3 'Materials and application'.

Your added values:



Higher temperature resistance.
Heat resistant to 120 °C.



Seals better.
Provides limited sealing action against ingress or outflow.



More versatile.
Suitable for various wall thicknesses and diameters.



Better.
Ideal for closing off apertures in cover panels.