



NEW

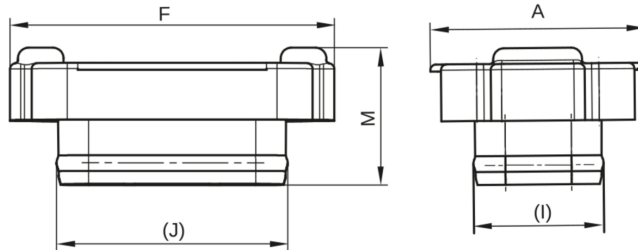
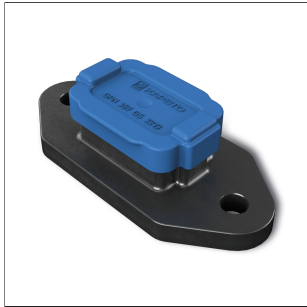
Application



www.blauer-engel.de/uz30a

The GPN 367 C contact protection is used to protect TE connector housings (german) in low-voltage applications. Thanks to its internal clamping contour, the contact protection seals according to protection class IPX2. Its flat design allows it to be used in confined installation spaces. Additionally, the contact protection can be installed from either side.

All information about 100% PCR and the recycling blend can be found in "Sustainability at Pöppelmann" (see chapter 2) or at www.poeppelmann.com/en/kapsto/Responsibility.html



PCR-PE
blue

100% PCR

Article	A	F	I	J	M	
GPN 367 GS 3219	45,6	30,2	32,2	18,6	19,2	36732190000

Dimensions in mm.

Information on materials, colours, designs and use of our products can be found on the website and in chapter 3 'Materials and application'.

Article	Manufacturer	Rows
GPN 367 GS 3219	TE Connectivity	2

** Related to Pöppelmann sample connector, tested according to DIN 40050. Please note the information in chapter 3 Materials and applications.

Our product advantages at a glance:



More resource-saving.

The plastic used consists of 100 % recycled material.



Saves time.

Quick disassembly thanks to non-slip grip surfaces.



Cleaner.

Production in accordance with VDA Band 19 and ISO 16232 in our cleanroom on request.